

GASTON DESIGN, INC.

970-858-4785

1943 K Road • Fruita CO 81521

www.gastondesign.com

CAT SKULLS



Large Cheetah-like skull
large w/base, 10," \$225
Location: China
Age: Late Miocene, 5.5 MYA



Smilodon Skull with base 15.5" \$350
Scientific name: Smilodon populator
Age: Pleistocene
Location: Uruguay



Homotherium skull with base of original matrix and bones 13,"
Skull available without base \$285
Skull with base \$435
Scientific Name: Homotherium sp.
Location: China • Age: Late Miocene, 6 MYA

GASTON DESIGN, INC.

970-858-4785

1943 K Road • Fruita CO 81521

www.gastondesign.com

CAT SKULLS



Small Cheetah-like Skull with base
6.5", \$190

Scientific Name: *Metalurus minor*

Location: Gansu Province, China

Age: Late Miocene, 5.5 MYA

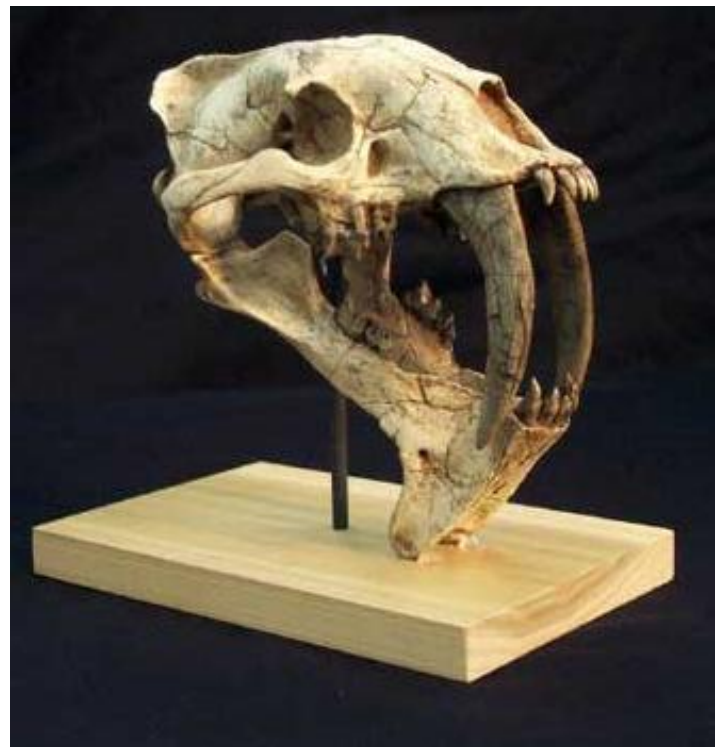
Eusmilus Skull with base
8", \$225

Scientific Name: *Eusmilus sicarius*

Location: South Dakota, USA

Formation: White River Member, Brule Formation

Age: Oligocene, 30 MYA



GASTON DESIGN, INC.

970-858-4785

1943 K Road • Fruita CO 81521

www.gastondesign.com

CAT SKULLS



Machairodus Skull with base
18", \$350

Scientific Name: Machairodus giganteus

Location: Gansu Province, China

Age: Late Miocene, 6 MYA



Machairodus Juvenile No. 1 Skull with base
9.5" Juvenile \$225

Scientific Name: Machairodus giganteus

Location: Gansu Province, China

Age: Late Miocene, 6 MYA



Machairodus Juvenile No. 2 Skull with base,
10" Juvenile \$225

Scientific Name: Machairodus giganteus

Location: Gansu Province, China

Age: Late Miocene, 6 MYA

GASTON DESIGN, INC.

970-858-4785

1943 K Road • Fruita CO 81521

www.gastondesign.com

CAT SKULLS



Megantereon Skull with base

10.25", \$225

Scientific Name: *Megantereon inexpectatus*

Location: China

Age: Late Miocene, 6 MYA



Sumatran Tiger Skull with base

12.5", \$325

Scientific Name: *Panthera tigris*

Age: Modern



Machairodus skull

medium with base, 13", \$275

Scientific Name: *Machairodus giganteus*

Location: China

Age: Late Miocene, 6 MYA